

INTERNATIONAL FACTS & FIGURES 2019



SOS CHILDREN'S
VILLAGES

SOS Children's Villages

SOS Children's Villages is the world's largest non-governmental organization focused on supporting children and young people without parental care or at risk of losing it. It was founded in 1949 by Hermann Gmeiner.

Child neglect, abuse and abandonment is everywhere. Families are at risk of separation. Locally led, we work in more than 130 countries and territories to strengthen families who are under pressure so they can stay together. When this is not in a child or young person's best interests, we provide quality care according to their unique needs.

Together with partners, donors, communities, children, young people and families, we enable children to grow up with the bonds they need to develop and become their strongest selves. We speak up for each child's rights and advocate for change so all children can grow up in a supportive environment.

www.sos-childrensvillages.org



CONTENTS

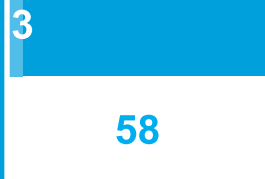
- 03 | Global Data on Child Rights
- 05 | Our Impact
- 07 | By the Numbers
- 15 | Partners List

GLOBAL DATA

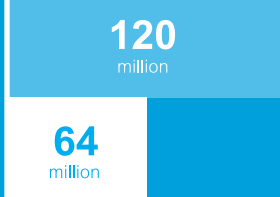
30 years of child rights

THERE HAS BEEN PROGRESS

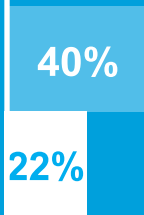
Number of countries that ban corporal punishment of children



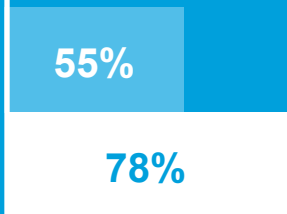
Number of children not in primary education



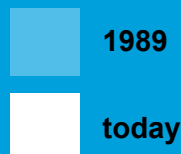
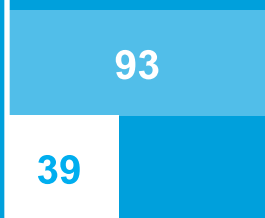
% of children worldwide whose growth is stunted due to malnutrition



Birth registration of children under 5

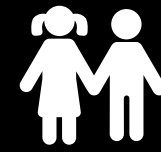


Under-5 mortality rate per 1,000 live births



(sources: Global Initiative to End all Corporal Punishment of Children; Joining Forces (2019), *A Second Revolution*)

1 BILLION CHILDREN



have experienced physical, sexual or emotional violence, or neglect in this year alone

(source: WHO)

BUT MANY CHALLENGES REMAIN

75%

of children in alternative care have had a traumatic experience before entering the care system

(source: "Trauma & Gewalt" Journal)

MORE THAN 5 MILLION CHILDREN



die every year from preventable causes

(source: WHO)

AN ESTIMATED 15 MILLION ADOLESCENT GIRLS

aged 15 to 19 have experienced forced sex

(source: Joining Forces)

BETWEEN 2% AND 5% GDP

estimated annual cost of violence against children

(source: Joining Forces)

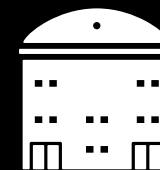
NEARLY 13 MILLION REFUGEES



who have been forced from their homes are under the age of 18

(source: UNHCR)

MORE THAN 5 MILLION CHILDREN



live in institutions

(source: UN Global Study on Children Deprived of Liberty)

80%

of children in formal alternative care have one or both parents alive

(source: Save the Children)

95,000 CHILDREN A YEAR

70% of them boys – are murdered

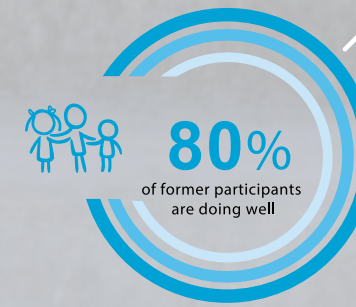
(source: Joining Forces)

of the nearly 140 million orphaned children around the world
15.1 MILLION HAVE LOST BOTH PARENTS

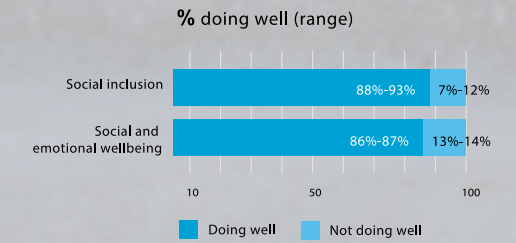
(source: UNICEF)

OUR IMPACT

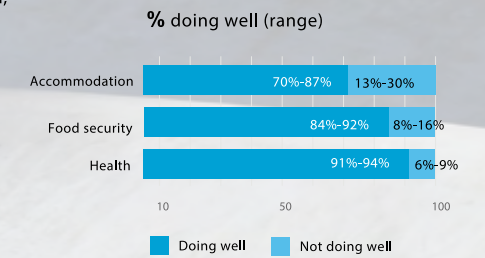
SOS Children's Villages has been directly caring for children since 1949. Our 70 Years of Impact report, published in April, tracks the long-term impact of our work in the lives of children and young people through our care and family strengthening programmes.



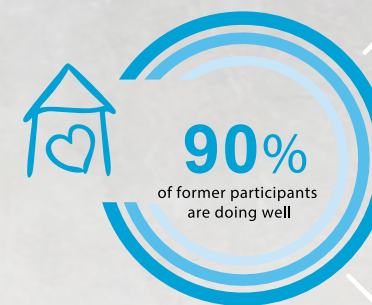
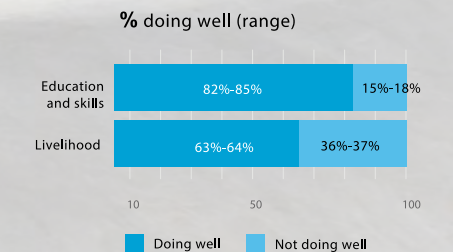
80% are doing well...
... in terms of social inclusion
and protection and
general well-being



90% are doing well...
... in at least 2 out of 3 of their
basic needs: accommodation,
food security and health



60% are doing well ...
... in becoming self-reliant
through education, skills
and the ability to secure
their own livelihood



**Family-like care:
90% are doing well ...**

... in terms of family relationships
and support networks

**Family-like care:
98% are doing well ...**

... in terms of fulfilling
their parental obligations

**Family strengthening:
95% are doing well ...**

... in terms of fulfilling
their parental obligations



PEOPLE REACHED
IN 2019

1,233,600



SUPPORTERS AND
DONORS IN 2019

4,000,000



EMPLOYEES
WORLDWIDE IN 2019

37,970*



GLOBAL
REVENUE 2019

1.4
billion

By the Numbers

The following section provides a global overview of our programme statistics and financial information. These results represent the combined efforts of locally rooted member associations around the world.

Programme Statistics

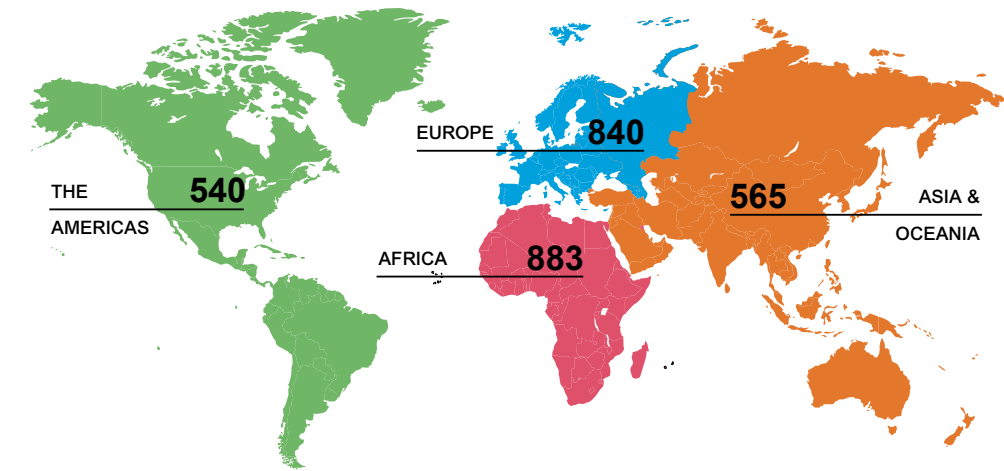
SOS Children's Villages is a global federation of locally rooted member associations. Our programmatic services, tailored to the unique needs of a community, are designed to keep families together and ensure that children and youth from vulnerable backgrounds grow up strong and resilient.

These statistics are based on reporting by our associations and represent our services for the calendar year 2019, as of 31 December 2019. Please note that in January 2019 a new programme structure was introduced. Certain services were renamed and/or re-mapped. Therefore, an exact comparison with 2018 data is not possible.

PEOPLE WE REACHED

	AFRICA	THE AMERICAS	ASIA & OCEANIA	EUROPE	TOTAL
ALTERNATIVE CARE					
<i>Children & young people</i>					
Family-like care	15,200	5,800	14,400	4,900	40,300
Youth care	6,400	2,600	6,400	3,000	18,400
Foster family care	500	650	0	3,000	4,150
Small group homes	200	50	50	1,400	1,700
Other alternative care ¹	200	800	50	200	1,250
TOTAL	22,500	9,900	20,900	12,500	65,800
PREVENTION					
<i>Children, young people & adults</i>					
Family strengthening	155,600	40,000	82,600	116,800	395,000
EDUCATION					
<i>Children, young people & adults</i>					
Early childhood care & development	13,200	13,800	4,800	6,000	37,800
Primary & secondary schools	80,200	6,100	43,700	54,200	184,200
Employment & entrepreneurship training	5,500	2,000	3,600	6,400	17,500
TOTAL	98,900	21,900	52,100	66,600	239,500
OTHER ACTIVITIES²					
<i>Children, young people & adults</i>					
	23,200	1,700	200	2,900	28,000
HEALTH					
<i>Children, young people & adults</i>					
Health promotion & prevention	53,400	0	100	1,500	55,000
Mother & Child Hospital, Somalia	240,500	0	0	0	240,500
TOTAL	293,900	0	100	1,500	295,500
EMERGENCY RESPONSE					
<i>Children, young people & adults</i>					
	146,500	12,300	16,200	34,800	209,800
GRAND TOTAL					1,233,600

PROGRAMMES BY CONTINENT



PROGRAMMES WE OPERATED

	AFRICA	THE AMERICAS	ASIA & OCEANIA	EUROPE	TOTAL
ALTERNATIVE CARE					
Family-like care	163	128	135	115	541
Small group homes	18	10	3	76	107
Foster family care	21	17	0	43	81
Youth care	128	117	169	181	595
Other alternative care	7	44	1	13	65
TOTAL	337	316	308	428	1,389
PREVENTION					
<i>Family strengthening</i>					
	180	137	107	256	680
EDUCATION					
<i>Early childhood care & development</i>					
	112	61	55	50	278
<i>Primary & secondary education</i>					
	111	8	54	27	200
<i>Employment & entrepreneurship</i>					
	51	15	24	35	125
TOTAL	274	84	133	112	603
OTHER ACTIVITIES					
	16	0	1	33	50
HEALTH					
<i>Health promotion & prevention</i>					
	19	0	2	5	26
<i>Medical care³</i>					
	44	1	4	0	49
TOTAL	63	1	6	5	75
EMERGENCY RESPONSE					
	13	2	10	6	31
GRAND TOTAL					2,828

¹ Includes care in transitional settings for unaccompanied minor refugees awaiting legal decision and support to other service providers to improve the quality of their care.

² Includes community outreach and education on children's rights, integration support, holiday camps and play buses.

³ These units delivered 677,960 single health services and 157,300 days of health service, primarily in Africa.

Financial Report

Our federation's financial information (see page 13) is based on the global, combined total of reports provided by our member associations and by our umbrella organisation SOS Children's Villages International. These reports are audited annually by independent and esteemed national auditors according to internationally accepted accounting standards.

2019 SUMMARY

The year 2019 continued the trend of positive growth in revenue for SOS Children's Villages. From 2018 to 2019, our federation's projected combined revenue grew by 7%, up from a growth rate of 2% in 2018. Individuals, with donations large and small, continue to be the financial backbone of our organization, sustaining nearly half of our annual revenue (growth rate of 8% in 2019). Our other primary funding source, government subsidies, was up by 5%, driven by an expansion in domestic programming and government partnerships in the American and European regions. Funding from our institutional partners continued to rise at a rapid rate of 22% in 2019.

While Western Europe remains our largest source of global revenue, countries in Central Eastern and Europe and the Commonwealth of Independent States – such as Albania, Belarus, Kosovo and Kyrgyzstan – are experiencing strong growth rates. Asia also grew by 13% in 2018 and continued this trend in 2019. Meanwhile, the Americas experienced growth of more than 13% in 2019, driven by increases in individual monthly giving, especially in Argentina, Bolivia, Brazil, Chile, Ecuador, Mexico and Peru. This was further supplemented by continued progress on government subsidies in the region.

ACCOUNTABILITY

As a member of Accountable Now and a board member of the International Civil Society Centre since 2012, we take our obligations around management transparency and accountability very seriously. The foundation of our approach is our policy document Good Management and Accountability Quality Standards. Our activities and progress in this regard are reflected in our regular reports to Accountable Now, which are publicly available.



SOS Children's Villages follows a zero tolerance approach to fraud and corruption. Our Anti-Fraud and Anti-Corruption Guideline aims to support all associations, board members and employees in preventing and managing potential issues of corruption. The detailed financial audit report of SOS Children's Villages International is available on our international website, as well as links to the websites of all our member associations.



FINANCIAL INFORMATION

All amounts in EUR 1,000 ¹

REVENUE	ACTUALS 2018	ACTUALS 2019 preliminary ²	% change 2018-2019
Sporadic donors	305,382	342,307	12%
Sponsorship/committed giving	308,844	319,508	3%
Major donors	27,153	28,721	6%
Foundations & lotteries	36,078	40,741	13%
Corporate donors	52,839	55,505	5%
Governmental subsidies for domestic programmes	422,302	444,563	5%
Institutional funding	32,005	38,996	22%
Emergency appeals	2,658	1,599	-40%
Other revenue ³	114,153	117,198	3%
Total Revenue	1,301,414	1,389,139	7%

EXPENDITURES ⁴	ACTUALS 2018	ACTUALS 2019 preliminary ²	% change 2018-2019
Alternative care	559,995	584,334	4%
Prevention	112,669	115,289	2%
Education	131,491	143,098	9%
SOS social centres	11,118	-	-
Other activities ⁵	20,318	27,509	35%
Health	10,861	13,467	24%
Emergency response	14,217	10,421	-27%
Running costs for other ⁶	-	8,112	-
Construction & investments	37,320	28,577	-23%
Programme support for national associations	107,621	113,112	5%
International coordination & programme support	44,727	48,775	9%
Information and fundraising work in promoting & supporting associations ⁷	202,491	205,576	2%
Total expenditures	1,252,829	1,298,269	4%

¹ Due to rounding, total numbers may not add up exactly.

² Independent external audits have not yet been completed in all 136 countries and territories for 2019 (as of 9 December 2020).

³ Other income refers to operational income from facilities, local income from events or merchandising, interest and other financial income.

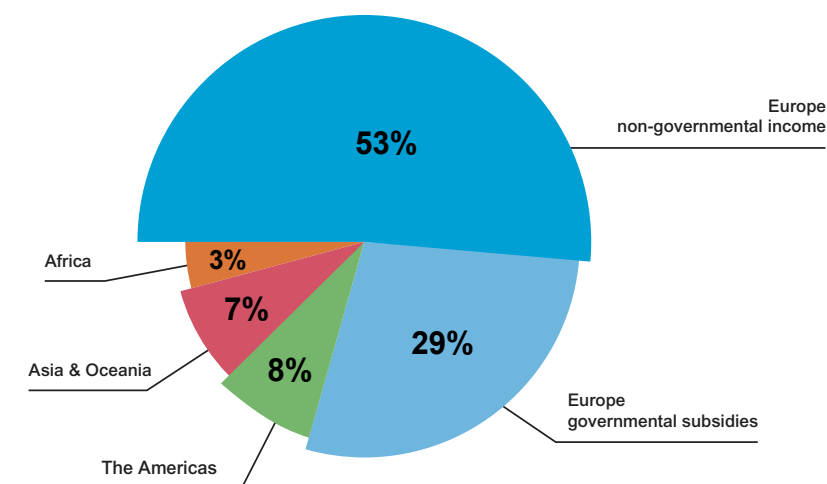
⁴ Please note that due to the introduction of a new programme structure in January 2019, an exact comparison with 2018 expenditure data is not possible.

⁵ Includes community outreach and education on children's rights, integration support, holiday camps and play buses.

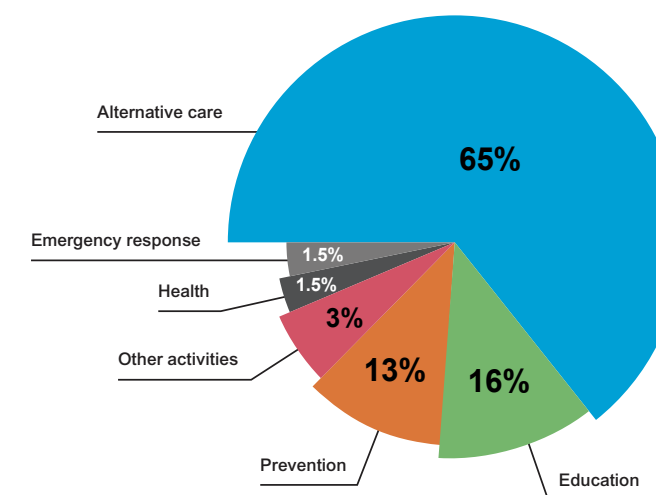
⁶ Includes advocacy, awareness-raising and other programmatic work in promoting and supporting associations.

⁷ Promoting and supporting associations are associations who raise funds for international programmes; some of them also operate domestic programmes.

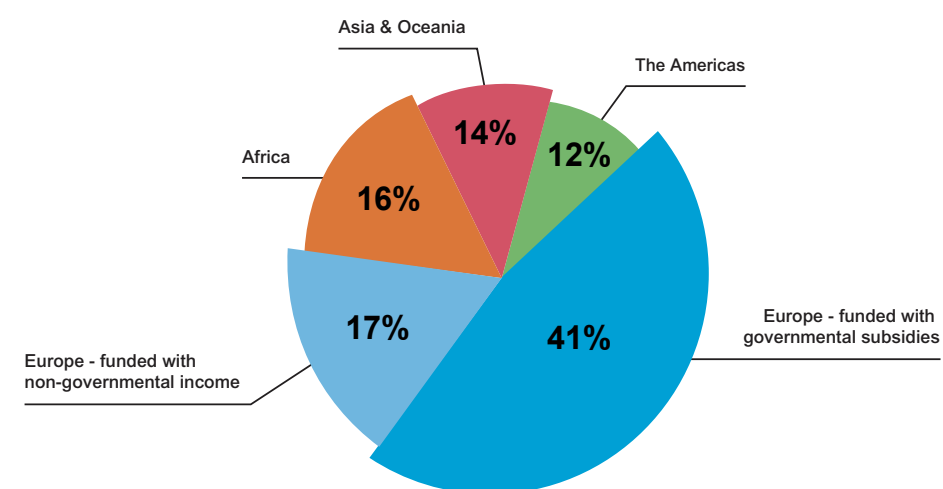
TOTAL REVENUE BY CONTINENT



PROGRAMME EXPENDITURES BY TYPE



PROGRAMME EXPENDITURES BY CONTINENT



Thank You All

Our national, international and local partners support our ongoing running costs and many of our innovative projects. We say thank you to those listed here and to the many thousands of other partners who make our work possible.

INTERGOVERNMENTAL & GOVERNMENTAL PARTNERS

Government of Austria

Austrian Development Agency (ADA)
Federal Ministry for Arts, Culture, Civil Service and Sports
Tyrolen Regional Government

Government of Belgium

Ministry of Foreign Affairs, Foreign Trade and Development Cooperation (DGD)
Wallonie-Bruxelles International

Government of Denmark

Danish International Development Agency (DANIDA)

Government of Honduras

Secretary of Development and Social Security

European Union

European Commission
European Council
European Investment Bank
Council of the European Union
European Parliament

Government of Finland

Funding Centre for Social Welfare and Health Organisations
Ministry for Foreign Affairs
Ministry for Social Affairs & Health

Government of France

French Development Agency (AFD)
Ministry of Foreign Affairs

Government of Germany

Federal Ministry for Economic Cooperation and Development (BMZ)
Federal Foreign Office

Government of Iceland

Ministry for Foreign Affairs

Government of Italy

Ministry of the Interior
Ministry of Welfare
Province of Trento
Region of Calabria

Government of Luxembourg

City of Luxembourg
Ministry of Foreign and European Affairs

Government of Monaco

Government of Morocco

Government of the Netherlands

Ministry of Foreign Affairs

Government of Norway

Norwegian Agency for Development Cooperation (NORAD)
Norwegian Directorate for Children, Youth and Family Affairs (BUFDIR)
Norwegian Directorate for Integration and Diversity (IMDI)

Ministry of Health and Care Services

Government of Spain

Province of Canary Islands
Province of Madrid

Government of Sweden

Gothenburg Municipality
Swedish Gender Equality Agency

United Nations

Funds and Programmes
International Labour Organization (ILO)
International Organisation for Migration (IOM)
UN Global Compact
United Nations High Commissioner for Refugees (UNHCR)

United Nations International Children's Emergency Fund (UNICEF)
UNWomen

FOUNDATION PARTNERS

Akelius Foundation
Balder Foundation
Bernard van Leer Foundation
Big Heart Foundation
Canada Feminist Fund
Captain Vassilis & Carmen Constantakopoulos Foundation
Cariplo Foundation
Costas M. Lemos Foundation
Dutch Postcode Lottery
Edith & Gotfred Kirk
Fondation de France
Fondation de Luxembourg
Grieg Foundation
Harry Hole Foundation
Hempel Foundation
Institute Circle
Intesa Bank Charity Fund
Maestro Cares Foundation
Mapfre Foundation
National Lottery Community Fund
Novo Nordisk Foundation
OAK Foundation
Obel Family Foundation
Stavros Niarchos Foundation
Stiftelsen Radiohjälpen
Stiftung Kinderhilfe
Stiftung zur Unterstützung der SOS Kinderdörfer-Liechtenstein
Swissair Staff Foundation for Children in Need
SWISS Children's Foundation
The Erling-Persson Family Foundation
The Leona M. and Harry B. Helmsley Charitable Trust
The PD Foundation
The SOL Foundation

LEADING LONG-TERM CORPORATE PARTNERS

adidas
Aegean Airlines
AkzoNobel

Allen & Overy
Allianz
Apotea
AstraZeneca
Bechgaard Foundation
Beiersdorf / Nivea
Bel: La Vache Qui Rit®
Bertelsmann
C&A Foundation
CEWE
Clarins
Deutsche Post DHL Group
Dr. August Oetker
Dufry Group
Foundation 4Life
Gazprombank
Gekås Ullared
GodEl / GoodCause
Hasbro
Hemköpskedjan
Herbalife Nutrition Foundation
Hilti
HOFER
HSBC
IKEA
Interquell
INTERSPAR
Johnson & Johnson
Johnson & Johnson Foundation
KFC
MAN
Marriott International
Mars Sverige
Mars Wrigley Confectionery
MAX Burgers
OBOS
Oriflame
OTP Group / DSK Bank
Preem
Procter & Gamble
Radisson Hotel Group
Schmidt Groupe
Svenska Petroleum Exploration
Svenska Postkodlotteriet
Swedbank Robur
Swiss International Air Lines
Swisscom
Transat
Vaillant
Vodafone Greece

Vorwerk
Western Union Foundation
White & Case

OTHER PARTNERSHIPS

Accountable Now
Better Care Network
Child Rights Connect
Children's Rights Action Group
Civil Society in Development (CISU)
CONCORD
Decent Jobs for Youth Initiative
European Council on Refugees and Exiles (ECRE)
International NGO Cooperation for Children (EDUCO)
EU Alliance for Investing in Children
Eurochild
Forum Syd
Fundamental Rights Platform
Generation Unlimited
Global Coalition to End Child Poverty
Global Responsibility: Platform for Development and Humanitarian Aid
International Civil Society Center
IsraAID
Joining Forces
NetHope
Social Platform
The Global Partnership to End Violence Against Children
The Civil Society Forum to End Violence Against Children (CSO Forum)
The NGO Committee on UNICEF
The NGO Major Group
Voluntary Organisations in Cooperation in Emergencies (VOICE)



Learn more about our national corporate partnerships.

SOS Children's Villages worked for children and young people in 136 countries and territories in 2019.

Countries and territories in which we operated an emergency response programme in 2019 are shown in **bold**.

Join us!

click here
or scan the code



Africa

Algeria
Angola
Benin
Botswana
Burkina Faso
Burundi
Cameroon
Cape Verde
Central African Republic
Chad
Côte d'Ivoire
Democratic Republic of the Congo
Djibouti
Egypt
Equatorial Guinea
Eswatini
Ethiopia
Ghana
Guinea
Guinea-Bissau
Kenya
Lesotho
Liberia
Madagascar
Malawi
Mali
Mauritius
Morocco
Mozambique

Namibia
Niger
Nigeria
Rwanda
Senegal
Sierra Leone
Somalia
Somaliland
South Africa
South Sudan
Sudan
Tanzania
The Gambia
Togo
Tunisia
Uganda
Zambia
Zimbabwe

The Americas

Argentina
Bolivia
Brazil
Canada
Chile
Colombia
Costa Rica
Dominican Republic
Ecuador
El Salvador
Guatemala
Haiti
Honduras
Jamaica
Mexico
Nicaragua
Panama
Paraguay
Peru
Uruguay
USA
Venezuela

Asia & Oceania

Armenia
Australia
Azerbaijan
Bangladesh
Cambodia
China
French Polynesia
Georgia
Hong Kong, SAR of China
India
Indonesia
Iraq
Israel
Japan
Jordan
Kazakhstan
Kyrgyzstan
Laos
Lebanon
Mongolia
Nepal
Pakistan
Palestine
Philippines
South Korea
Sri Lanka
Syria
Taiwan, China
Thailand
United Arab Emirates
Uzbekistan
Vietnam

Europe

Albania
Austria
Belarus
Belgium
Bosnia and Herzegovina
Bulgaria
Croatia
Czech Republic
Denmark
Estonia
Finland
France
Germany
Greece
Hungary
Iceland
Italy
Kosovo
Latvia
Lithuania
Luxembourg
Netherlands
North Macedonia
Northern Cyprus
Norway
Poland
Portugal
Romania
Russia
Serbia
Spain
Sweden
Switzerland
Ukraine
United Kingdom

Find us on social media:

