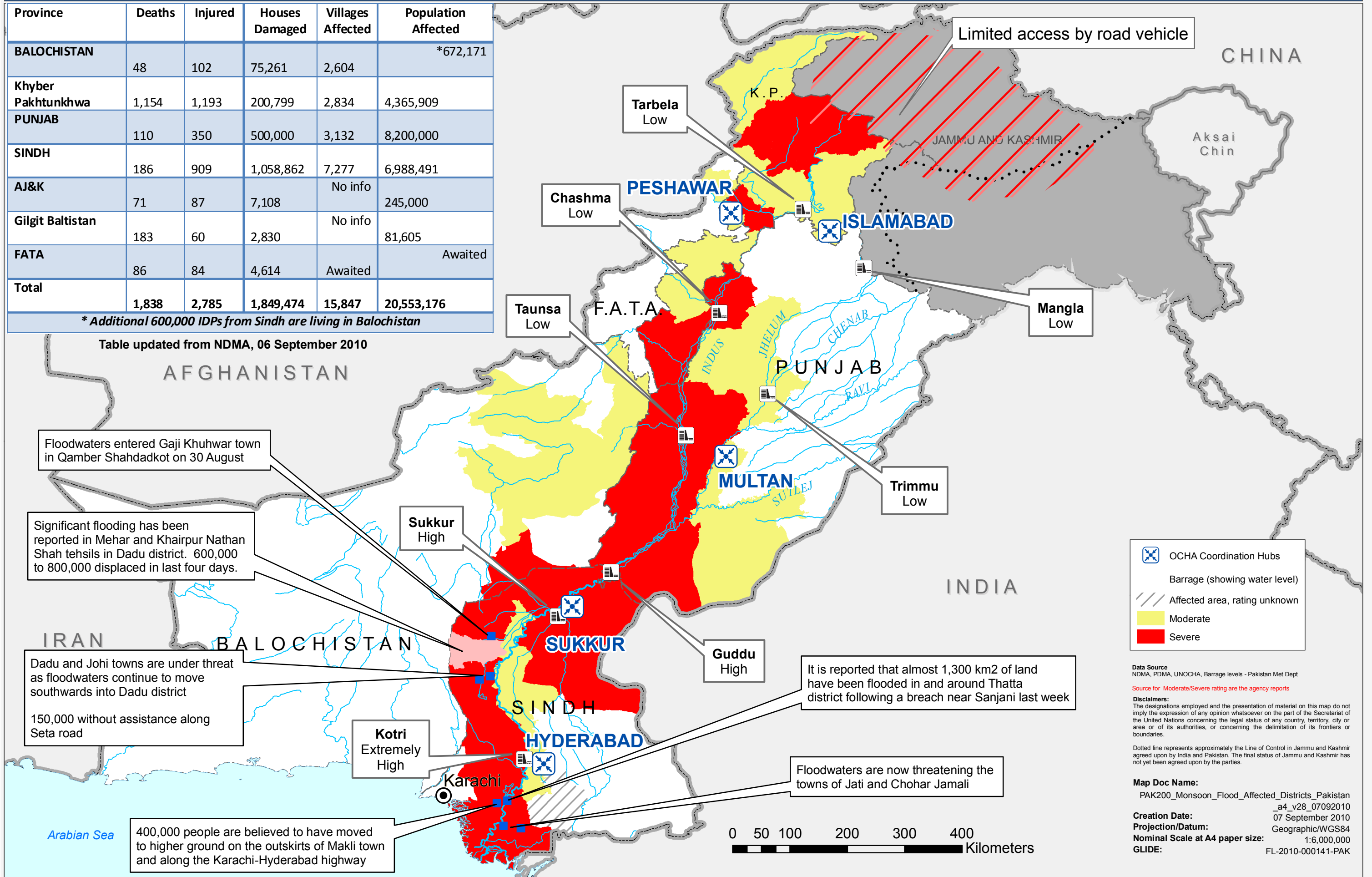


Province	Deaths	Injured	Houses Damaged	Villages Affected	Population Affected
BALUCHISTAN	48	102	75,261	2,604	*672,171
Khyber Pakhtunkhwa	1,154	1,193	200,799	2,834	4,365,909
PUNJAB	110	350	500,000	3,132	8,200,000
SINDH	186	909	1,058,862	7,277	6,988,491
AJ&K	71	87	7,108	No info	245,000
Gilgit Baltistan	183	60	2,830	No info	81,605
FATA	86	84	4,614	Awaited	Awaited
Total	1,838	2,785	1,849,474	15,847	20,553,176

* Additional 600,000 IDPs from Sindh are living in Balochistan

Table updated from NDMA, 06 September 2010



Floodwaters entered Gaji Khuhwar town in Qamber Shahdadkot on 30 August

Significant flooding has been reported in Mehar and Khairpur Nathan Shah tehsils in Dadu district. 600,000 to 800,000 displaced in last four days.

Dadu and Johi towns are under threat as floodwaters continue to move southwards into Dadu district
150,000 without assistance along Seta road

400,000 people are believed to have moved to higher ground on the outskirts of Makli town and along the Karachi-Hyderabad highway

It is reported that almost 1,300 km2 of land have been flooded in and around Thatta district following a breach near Sanjani last week

Floodwaters are now threatening the towns of Jati and Chohar Jamali

- OCHA Coordination Hubs
- Barrage (showing water level)
- Affected area, rating unknown
- Moderate
- Severe

Data Source:
NDMA, PDMA, UNOCHA, Barrage levels - Pakistan Met Dept

Source for Moderate/Severe rating are the agency reports

Disclaimers:
The designations employed and the presentation of material on this map do not imply the expression of any opinion whatsoever on the part of the Secretariat of the United Nations concerning the legal status of any country, territory, city or area or of its authorities, or concerning the delimitation of its frontiers or boundaries.

Dotted line represents approximately the Line of Control in Jammu and Kashmir agreed upon by India and Pakistan. The final status of Jammu and Kashmir has not yet been agreed upon by the parties.

Map Doc Name:
PAK200_Monsoon_Flood_Affected_Districts_Pakistan_a4_v28_07092010

Creation Date:
07 September 2010

Projection/Datum:
Geographic/WGS84

Nominal Scale at A4 paper size:
1:6,000,000

GLIDE:
FL-2010-000141-PAK

