



# THE IMPACT ASSESSMENTS

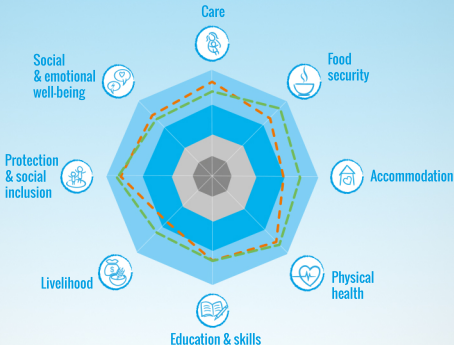
**Before** participation in the SOS programme children are doing poorly. **After** participation in the SOS programme around 80% of former participants are doing well or very well in at least six of the eight dimensions. **This chart shows how children are doing on average after they leave SOS programmes.**

Very poorly

Well

Poorly

Very well



SOS family care — SOS family strengthening